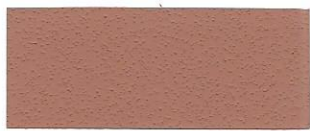
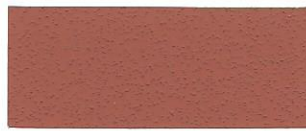




Terra Cotta Light



Terra Cotta Medium



Terra Cotta Dark



Terra Cotta Deep



Merlot Light



Merlot Medium



Merlot Dark



Merlot Deep



Wheat Light



Wheat Medium



Wheat Dark



Wheat Deep



Brownstone Light



Brownstone Medium



Brownstone Dark



Brownstone Deep



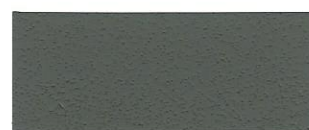
Coal Light



Coal Medium



Coal Dark



Coal Deep



Acorn Light



Acorn Medium



Acorn Dark



Acorn Deep



Mocha Light



Mocha Medium



Mocha Dark



Mocha Deep

The color of raw materials or a sample strip is subject to variation from the color chip reproduction above. Colors above are as accurate as can be produced using the finest materials of reproduction. Job site variations from the above color may occur due to the differences in the local raw materials and methods of application. Before final color selection is made, a job site panel should be erected and approved.

**Prism Corporation**

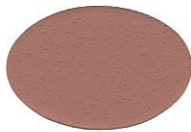
A division of Mix Manufacturing, Inc.

1251 Arundel Street St. Paul, MN 55117 | Toll Free: (888) 440-4250 | (651) 488-4250 | Fax: (651) 488-6091 | [www.prism-corporation.com](http://www.prism-corporation.com)

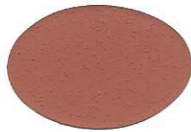




P0610  
Watermelon



P0620  
Coral



P0640  
Sunset



P3210  
Medium Buff



P3220  
Yellowstone



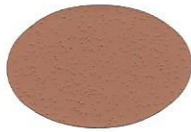
P3240  
Harvest



P1110  
St. Paul Buff



P1120  
Peach



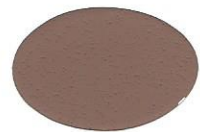
P1140  
Bonfire



P0810  
Lady Slipper



P0820  
Mauve



P0840  
Leather



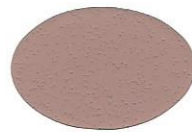
P2910  
Mesa



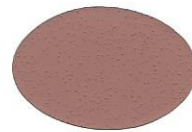
P2920  
Sahara



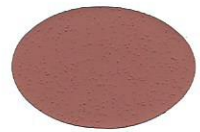
P2940  
Rattan



P1810  
Bisque



P1820  
Strawberry



P1840  
Red Barn



P4110  
Chestnut



P4120  
Woodchip



P4140  
Walnut



P4510  
Suede



P4520  
Chocolate



P4540  
Oxford Brown



P5710  
Wagon Wheel



P5720  
Timberwolf



P5740  
Derby



P5810  
Chamois



P5820  
Wicker Tan



P5840  
Ash Brown



P9110  
Slate Grey



P9120  
Dolphin



P9140  
Gun Metal



P9530  
Seafoam\*\*



P9560  
Light Jade\*\*



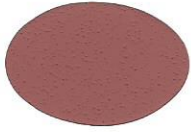
P9030  
Shadow Slate\*\*



P9420  
Sandy Buff



P5860  
Sable



P1860  
Northern Lights



P9920  
Blue\*\*



P2960  
Cornsilk



P9160  
Ebony

**\*\*denotes special order**

The color of raw materials, or a sample strip, is subject to variation from the color chip reproduced above. Colors above are as accurate as can be produced using the finest materials of reproduction. Jobsite variations from the above color may occur due to differences in local raw materials and methods of application. Before final color selection is made, a jobsite panel should be erected and approved.

